

Moley Magnetics, Inc.

# MAGNET GENERATOR SETS

Mag Gen Systems with Diesel, Hydraulic,  
and Belt-Driven generators



[www.moleymagneticsinc.com](http://www.moleymagneticsinc.com) | 1 (844) 662-4638 | [info@moleyinc.com](mailto:info@moleyinc.com)

Moley Magnetics, Inc. | 5202 Commerce Drive | Lockport, NY 14094

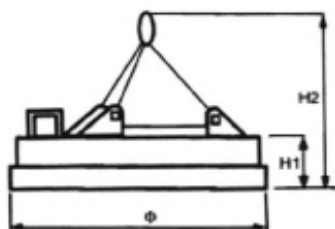


## 230-Volt Scrap Magnets (ESM)

- Weight design allows for use on lighter machinery
- Wide range of sizes 30" - 72"
- \*Other sizes available upon request
- Lifting capability as high as 4,450 Lbs

Our standard scrap magnets are heavy duty magnets manufactured to endure the rigors of any industry. These magnets are designed for everyday use in scrap yards or demolition sites. Available in a wide range of sizes depending on your application.

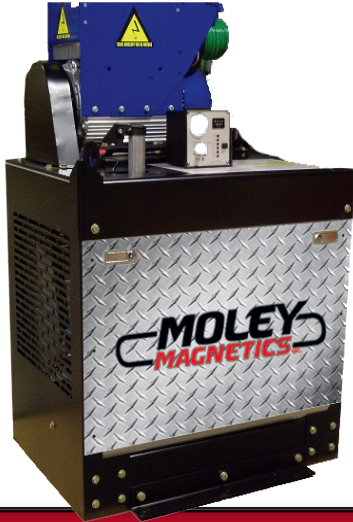
Powerful and rugged, these magnets have been built to ensure years of maximum performance.



| MODEL  | WEIGHT   | KW      | VDC  | DIA. | HT. H1 | HT. H2 | HM1      | HM2      | TURNINGS |
|--------|----------|---------|------|------|--------|--------|----------|----------|----------|
| ESM 30 | 935 lb   | 2.8 KW  | 230V | 30"  | 10.43" | 41.3"  | 557 lb   | 360 lb   | 214 lb   |
| ESM 32 | 1,059 lb | 3.2 KW  | 230V | 32"  | 10.43" | 41.3"  | 615 lb   | 405 lb   | 230 lb   |
| ESM 36 | 1,430 lb | 4.0 KW  | 230V | 36"  | 10.43" | 41.3"  | 825 lb   | 500 lb   | 245 lb   |
| ESM 38 | 1,433 lb | 4.5 KW  | 230V | 38"  | 10.43" | 45.27" | 1,015 lb | 620 lb   | 300 lb   |
| ESM 42 | 1,654 lb | 5.5 KW  | 230V | 42"  | 10.43" | 45.27" | 1,200 lb | 740 lb   | 330 lb   |
| ESM 44 | 1,874 lb | 6.5 KW  | 230V | 44"  | 10.43" | 45.27" | 1,500 lb | 980 lb   | 405 lb   |
| ESM 50 | 2,536 lb | 8 KW    | 230V | 50"  | 11"    | 45.27" | 1,800 lb | 1,224 lb | 500 lb   |
| ESM 58 | 3,748 lb | 10 KW   | 230V | 58"  | 11"    | 49.21" | 2,875 lb | 1,900 lb | 760 lb   |
| ESM 60 | 4,410 lb | 12.5 KW | 230V | 60"  | 11.81" | 49.21" | 3,200 lb | 2,275 lb | 930 lb   |
| ESM 64 | 5,622 lb | 15 KW   | 230V | 64"  | 12.6"  | 49.21" | 3,600 lb | 2,650 lb | 1,100 lb |
| ESM 72 | 7,436 lb | 18 KW   | 230V | 71"  | 17.1"  | 49.21" | 4,450 lb | 2,950 lb | 1,470 lb |

**MagStar Diesel  
Generator System**

# MAGSTAR DIESEL GENERATOR SET



- Powerful diesel engine
- Portable and compact
- High Efficiency
- Low fuel consumption
- Global emissions compliant
- Also available in Belt-Drive

Moley diesel-fueled generator sets are built to world-class standards: high efficiency, low fuel consumption and global emissions compliance.

Moley MagStar Diesel Gen Sets are prime movers that meet all current emission standards in North America and have the highest operating efficiency.

Engine and generator are optimized for maximum cooling efficiency with zero cross contaminating air flow.

Available as Belt-Driven.

**MagStar Hydraulic  
Magnet Generator**

# MAGSTAR HYDRAULIC GENERATOR SET



- Waterproof and maintenance-free IP54 system
- Hydraulic Motor
- Wide generator speed range
- Fused control box
- Self-diagnosing controller
- Also available in Belt-Drive

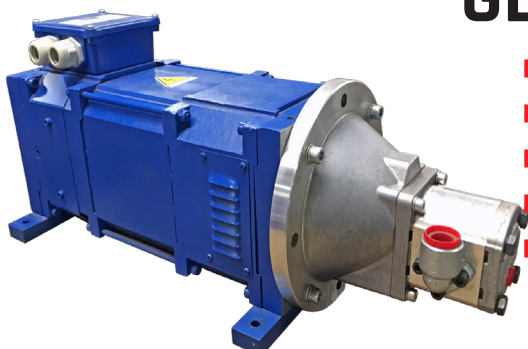
Moley MagStar Hydraulic Magnet Generators are highly durable, electronically controlled brushless synchronous generators.

The low-noise housing of the generator is splash-proof according to IP54 specifications and provides highly effective ventilation.

Available as Belt-Driven.

**Geid Hydraulic DC  
Generator System**

# GEID HYDRAULIC GENERATOR SET



- Available with 12V or 24V
- Light-weight
- Portable
- Compact
- Also available in Belt-Drive

Our GEID Hydraulic Generator Systems are available with 12V or 24V control voltage. This proven technology is compact, consistent, and reliable.

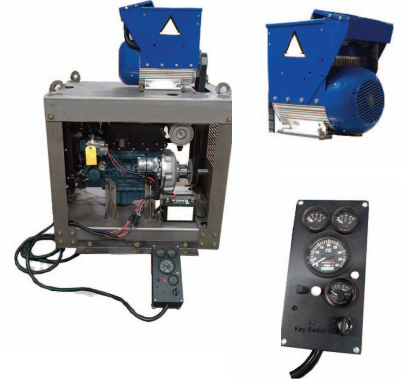
DC Generators feature long-lives and are rewindable. These generators are highly durable and have been designed for continuous operation.

Available as Belt-Driven.



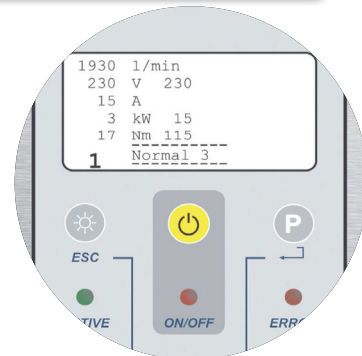
## MagStar Diesel Generator System

| MAGSTAR  | 9 KW   | 15 KW                            |
|--|--|----------------------------------|
| DIESEL ENGINE  | KUBOTA 4 CYL<br>24.8HP@2,800 RPM   | KUBOTA 4 CYL<br>24.8HP@2,800 RPM |
| MURPHY ENGINE CONTROL PANEL<br>(W/ OIL PRESSURE & TEMP GAUGES) | With 20' wiring harness to remotely start, stop engine and control throttle from inside operators cab. |                                  |
| MAGNET - Moley   | ESM 30"-50"  | UP TO ESM 64"                    |
| GENERATOR<br>RUN VOLTS<br>MAX. CURRENT                         | GEMA 9KW<br>230 VDC<br>39 AMPS   | GEMA 15KW<br>230 VDC<br>69 AMPS  |
| BELT DRIVE<br>(LOW MAINTENANCE)                                | Simple V-Belt drive, oversize pulleys with Hayes bearing supported stub shaft for maximum engine life  |                                  |
| L x W x H  | 36" x 23" x 37"  | 36" x 23" x 37"                  |
| FUEL TANK  | 12 GALS  |                                  |
| WEIGHT (approx.)   | 840 lbs.   | 920 lbs.                         |



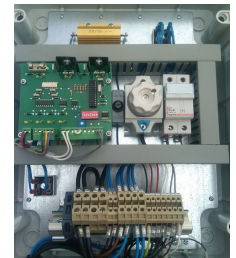
## MagStar Hydraulic Magnet Generator

|               |   | 9 KW  |       | 15 KW |       | 20 KW |       | 30 KW |
|---------------|---|-------|-------|-------|-------|-------|-------|-------|
| Poles         |   | 2     | 4     | 2     | 4     | 2     | 4     | 2     |
| Voltage       |   | 230V  | 230V  | 230V  | 230V  | 230V  | 230V  | 230V  |
| Amps          |   | 39    | 39    | 65    | 65    | 86    | 86    | 130   |
| RPM           |   | 3000  | 2000  | 3000  | 2000  | 3000  | 2000  | 1800  |
| Dims - inches | L | 28.75 | 28.75 | 28.75 | 28.75 | 32.25 | 32.25 | 30.25 |
|               | W | 10.5  | 10.5  | 10.5  | 10.5  | 10.5  | 10.5  | 12.75 |
|               | H | 17    | 17    | 17    | 17    | 20    | 20    | 22.25 |
| Weight - Lbs  |   | 165   | 165   | 209   | 209   | 260   | 260   | 396   |



## Geid Hydraulic DC Generator System

| TYPE    | POWER KW | VDC | MAX AMPS | BATTERY VOLTAGE | RPM  | MOTOR TYPE   | G/ MINUTE | MIN PSI | MAX PSI | MAX POWER KW |
|---------|----------|-----|----------|-----------------|------|--------------|-----------|---------|---------|--------------|
| GEID 5  | 5        | 230 | 22       | 12 or 24        | 2600 | Gear         | 9.5       | 465     | 1,861   | 4.5          |
| GEID 7  | 7        | 230 | 32       | 12 or 24        | 2600 | Gear         | 11.4      | 465     | 2,171   | 6.5          |
| GEID 8  | 8        | 230 | 46       | 12 or 24        | 2500 | Gear         | 15.3      | 465     | 2,248   | 7.5          |
| GEID 12 | 12       | 230 | 54       | 12 or 24        | 2500 | Gear         | 18.2      | 465     | 2,326   | 11           |
| GEID 16 | 16       | 230 | 72       | 12 or 24        | 2500 | Axial Piston | 13.7      | 465     | 3,721   | 15           |
| GEID 20 | 20       | 230 | 90       | 12 or 24        | 2500 | Axial Piston | 19.8      | 465     | 3,100   | 19           |
| GEID 25 | 25       | 230 | 113      | 12 or 24        | 2500 | Axial Piston | 19.8      | 465     | 3,721   | 24           |



## Scrap Magnet Control System

| TYPE    | LENGTH (IN) | WIDTH (IN) | HEIGHT (IN) | WEIGHT (LBS) |
|---------|-------------|------------|-------------|--------------|
| GEID 5  | 28          | 9          | 12          | 172          |
| GEID 7  | 29          | 9          | 12          | 195          |
| GEID 8  | 33          | 10         | 12          | 244          |
| GEID 12 | 36          | 12         | 13          | 265          |
| GEID 16 | 38          | 12         | 15          | 309          |
| GEID 20 | 44          | 12         | 15          | 441          |
| GEID 25 | 44          | 12         | 15          | 441          |

| GENERATOR | BATTERY VOLTAGE | CONTROL PANEL |
|-----------|-----------------|---------------|
| GEID 5    | 12 OR 24        | CED 24/16R    |
| GEID 7    | 12 OR 24        | CED 24/16R    |
| GEID 8    | 24              | CED 24/25R    |
| GEID 12   | 24              | CED 24/25R    |
| GEID 16   | 24              | CED 24/25R    |
| GEID 20   | 24              | CED 24/25R    |
| GEID 25   | 24              | CED 24/25R    |